



Rapid Response Team Update

THAO SCHLICHTE

FEBRUARY 9, 2023

INSPECTIONS & APPEALS



Epi Investigation



Public Health
Prevent. Promote. Protect.

On Monday, July 26, 2022, Iowa HHS was notified by a LPH agency of three Salmonellosis cases they interviewed that reported consuming cantaloupe purchased from two different roadside produce vendors



The name of the roadside produce vendors is unknown but they were able to share the street locations



One inspector from this LPH agency was in the field and offered to drive by these locations to confirm the information provided. One location was confirmed, the second location was not open

Iowa Department of
INSPECTIONS & APPEALS



How it started...

- ▶ Call received on August 10, 2022, Iowa Health and Human Services (IHHS) notified DIA that there was an outbreak
- ▶ 8 cases of *Salmonella* Typhimurium throughout Central and Eastern IA, and more pending
- ▶ Initial call with IHHS, SHL, and DIA
 - ▶ Help needed with Traceback
 - ▶ Sampling

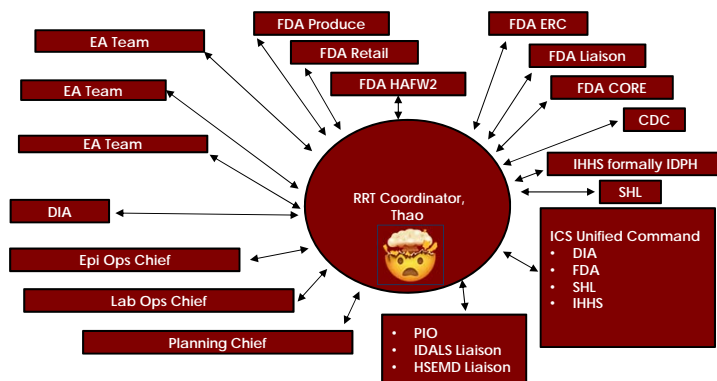


When do you know you need to activate?

- ▶ More cases started coming in... 20 and counting
- ▶ More purchase locations identified
- ▶ EA team members begin sending in traceback records = distribution and/or supplier information
- ▶ First collection began Friday August 12th through Sunday August 14th

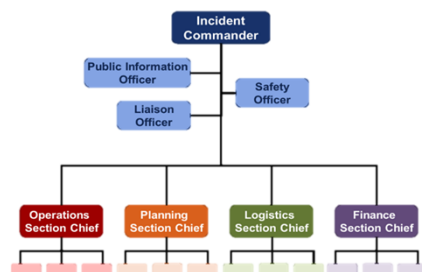


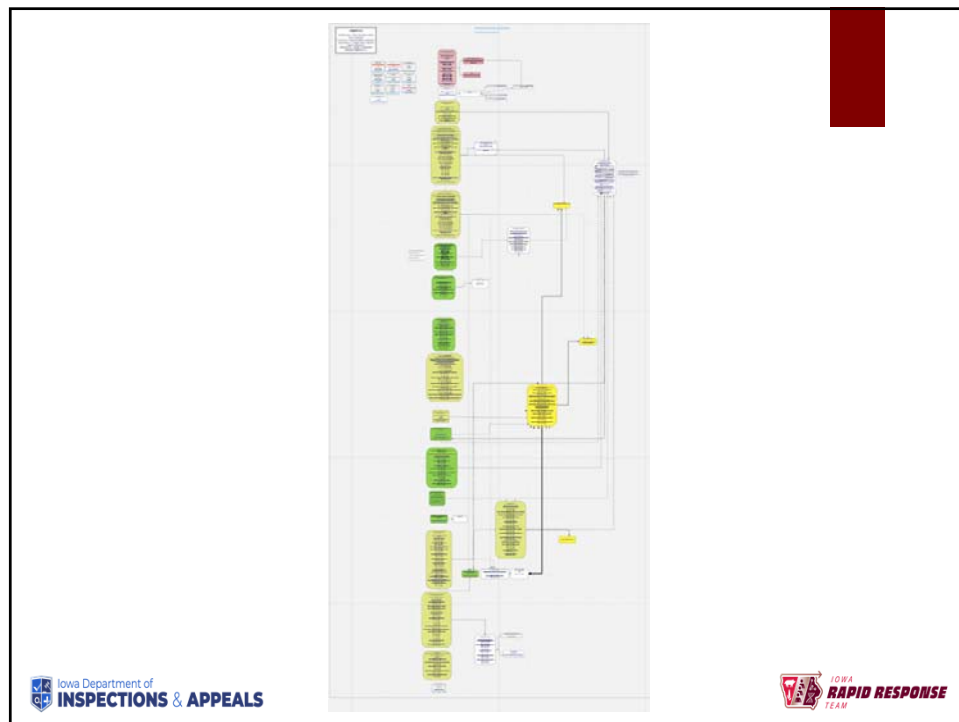
Who, What, When, Where, Why?



Incident Command System (ICS) Activation

- Incident Command System (ICS): is a standardized approach to control and coordinate the event response, providing a common hierarchy among multiple agencies.





Fieldwork: Initial Response and Beyond...

- ▶ Case Interviews
- ▶ Stands visited..... A lot
- ▶ Farmer's Markets
- ▶ Retailers contacted
- ▶ Produce Auctions
- ▶ Growing operations
- ▶ Who went where? Central and Eastern Iowa
- ▶ No "I" in Team, many hands/agencies on deck
- ▶ Samples taken...54



RECORD COLLECTION and Lots and Lots of MEETINGS...

- ▶ Records:
 - ▶ Invoices/receipts
 - ▶ Supplier seed records
 - ▶ Emails
 - ▶ Photos
 - ▶ Supplier and distribution records
- ▶ Meetings:
 - ▶ FDA CORE ICS x 7
 - ▶ CDC
 - ▶ FDA meetings with the Firm
 - ▶ IA RRT and FDA Traceback Collaboration
- ▶ Meetings:
 - ▶ IA RRT ICS
 - ▶ Kick-off
 - ▶ Tactics
 - ▶ Planning
 - ▶ Operations Briefings

After Action Review: Lessons Learned

WHAT DID NOT GO SO WELL...

- ▶ Lack of structure in the beginning
- ▶ Information flow
- ▶ Communicating with firms and asking the right questions
- ▶ One person to focus solely on traceback
- ▶ Inexperience with sampling
- ▶ Sampling large produce

WHAT WORKED

- ▶ Communication with LCA, FDA/CORE, CDC, Public Health, IHHS, and SHL
- ▶ Language barrier in the field, team members available to translate in the field
- ▶ Prior networking with larger retailer firms
- ▶ Thinking outside the box when trying to locate vendors
- ▶ ICS: meetings well planned and organized
- ▶ Field staff exhibited flexibility
- ▶ Constant problem solving

After Action Review: Improvement Plan

- ▶ Information available on Iowa Department of Agriculture and Land Stewardship's website to educate vendors/growers on best practices
- ▶ Annual training for sample techniques for the EA team to maintain proficiency
- ▶ Training EA team or other field staff on investigation interview techniques - what questions to ask, what "trails" to follow; ER 220 Traceback Investigations training
- ▶ Update DIA sampling SOP to address product sampling; discuss retail sampling procedures
- ▶ Identify key staff who have completed advanced ICS training to perhaps step up into a Deputy role; continue to look for position-specific training in ICS
- ▶ Work with the SHL on sampling and chain of custody improvements to be made
- ▶ Record sampling training - procedures, documentation, etc.

Outbreak overview

- ▶ The outbreak consisted of 88 cases from 11 states: GA (1), IA (39), IL (5), IN (17), KY (3), MI (3), MN (4), MO (2), OH (3), SC (1), WI (10)
- ▶ 39 Iowans from 18 counties became ill with *Salmonella* Typhimurium after consuming melons purchased from various roadside produce vendors
 - ▶ Isolation dates range from 7/14/2022- 9/6/2022
 - ▶ Of these, 26 (67%) were female.
 - ▶ The median age was 68 years (range 1-85 years)
 - ▶ Fifteen (38%) individuals were hospitalized and no deaths were reported



Outbreak Overview

- ▶ In total, there were over 50 people involved in this response
- ▶ Traceback was attempted on 38 different operators. Of these, 10 retail grocery stores, 9 roadside stands, 2 farmer markets, 7 distributors, and 9 brokers were identified for follow-up
- ▶ 54 melons were tested at SHL
- ▶ This response could not have been successful without good relationships with state, local, and federal partners



THANK YOU!!!

- ▶ FDA HAFW2
- ▶ FDA CORE
- ▶ CDC
- ▶ IHHS
- ▶ SHL
- ▶ LCA
- ▶ DIA



Questions?

Thao Schlichte

P:515-401-7274

thao.schlichte@dia.iowa.gov

